

BALCONY SOLAR SYSTEM

Your Personal Power Plant

Solavita | **SKYWORTH**
A SKYWORTH Company 00751.HK

All Rights Reserved @Shenzhen Skyworth Photovoltaic Technology Co., LTD. Please refer to the latest version for any updates

CONTENT

02 CORE COMPONENTS

Export limitation device (Standard)

All-in-one Hybrid System (Optional)

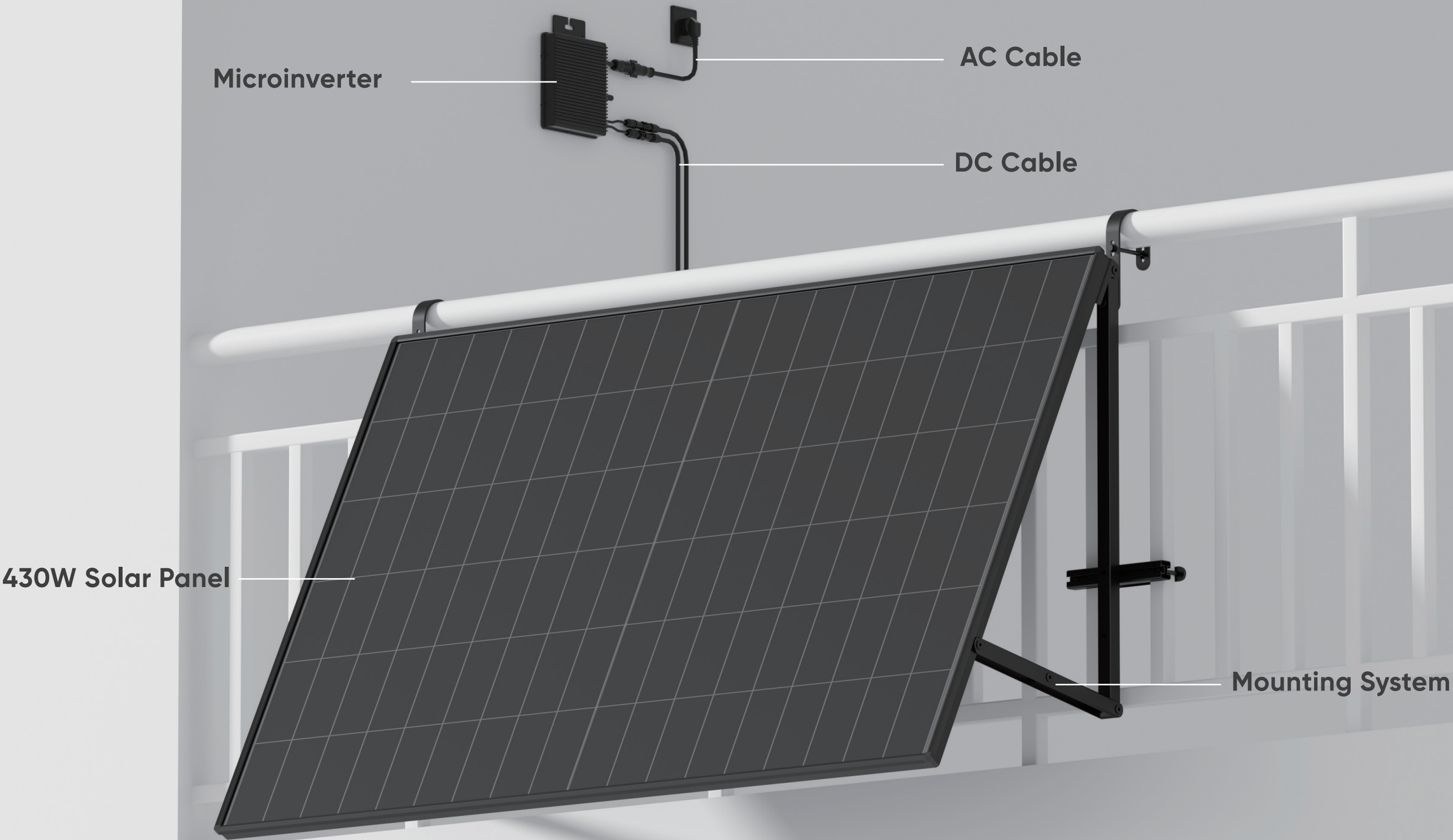
01 SOLUTIONS

FACADE
MOUNTING

FENCE
MOUNTING

GROUND
MOUNTING

CONCRETE
MOUNTING



Microinverter

AC Cable

DC Cable

430W Solar Panel

Mounting System

FENCE MOUNTING

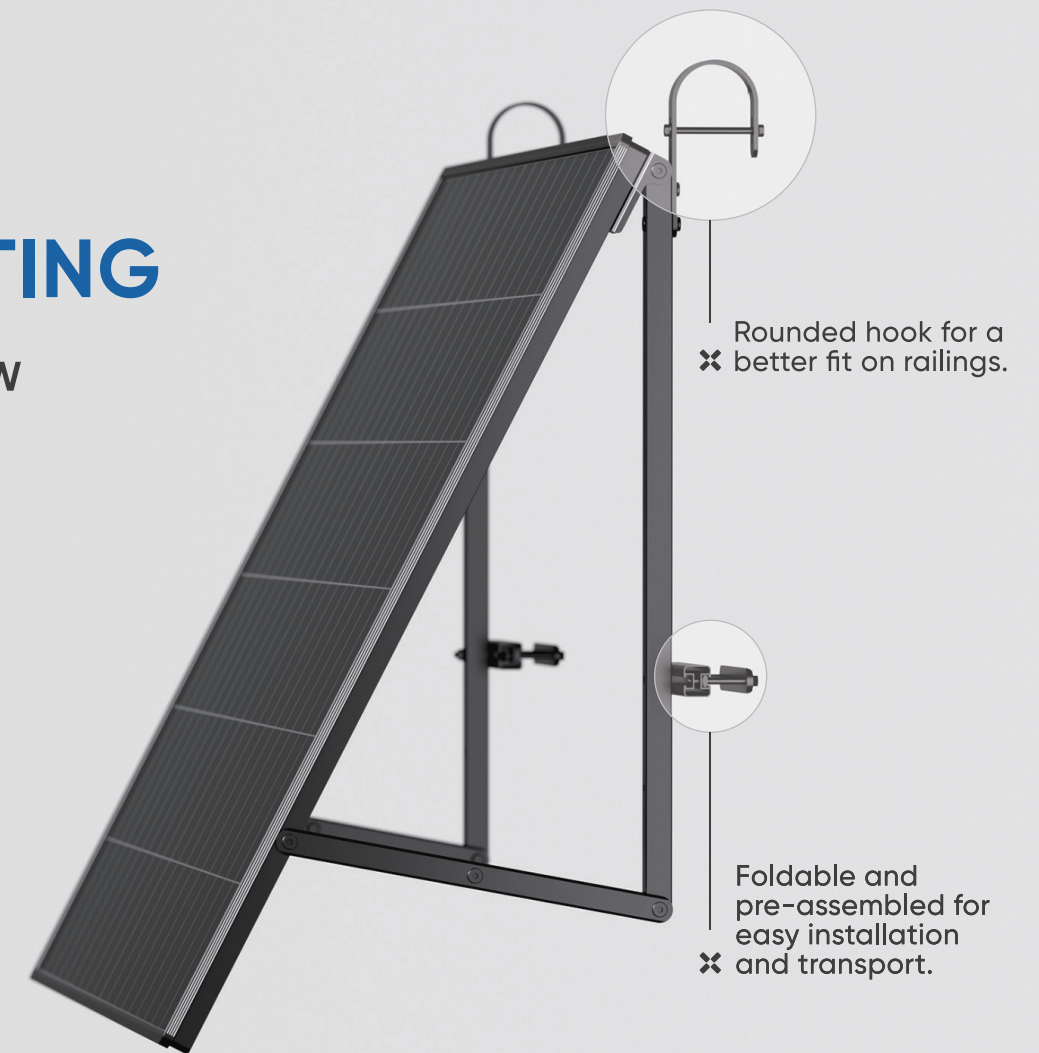
FENCE MOUNTING

POWER 430W

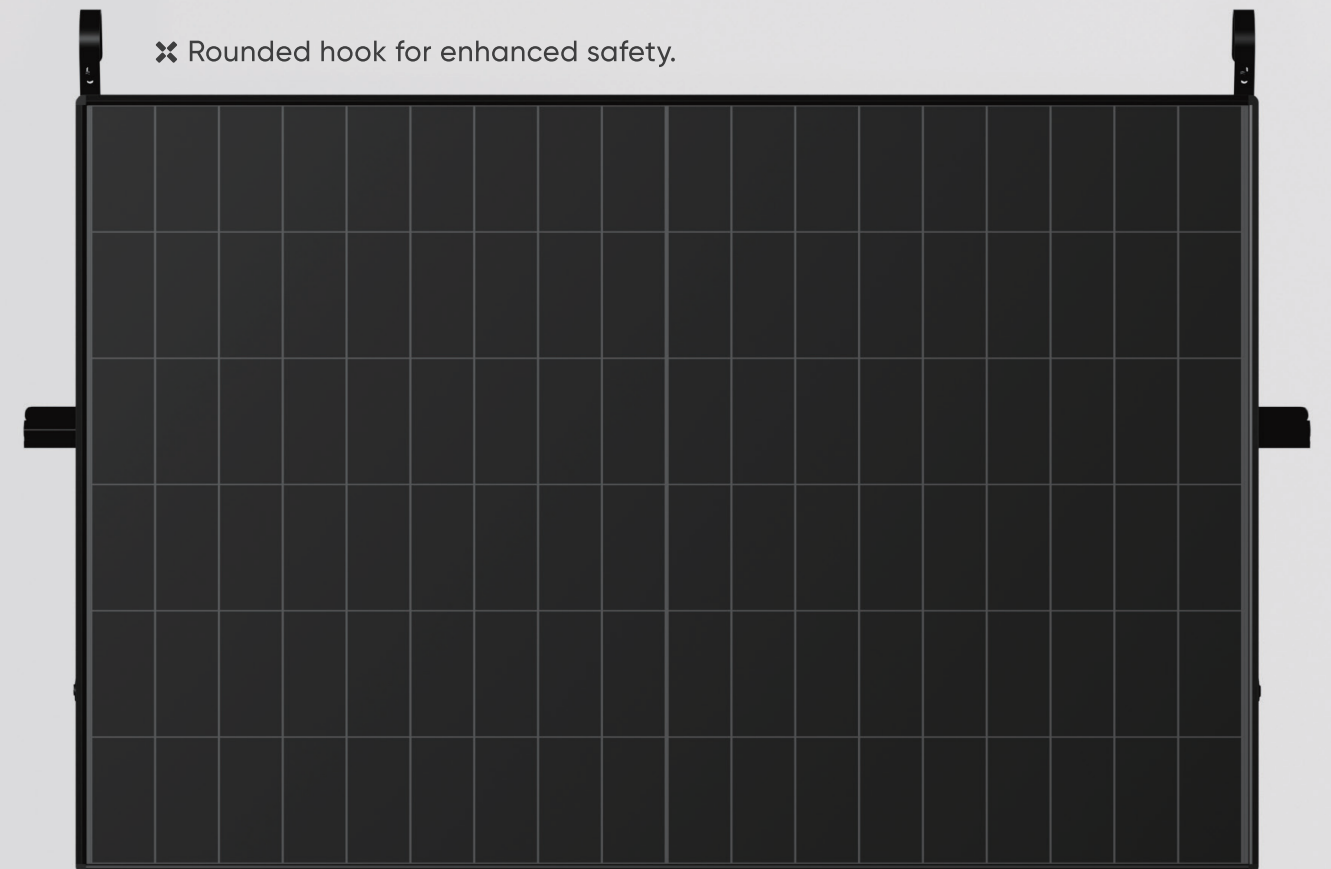
DIMENSION



1730×1142×35MM



✕ Rounded hook for enhanced safety.



-  Export limitation device
-  Resistant to wind and snow
-  Sleek Design
-  Plug-and-play
-  Pre-installed mounting system

CONCRETE MOUNTING

CONCRETE MOUNTING

POWER 665W/430W

✕ Constructed by stainless steel materials

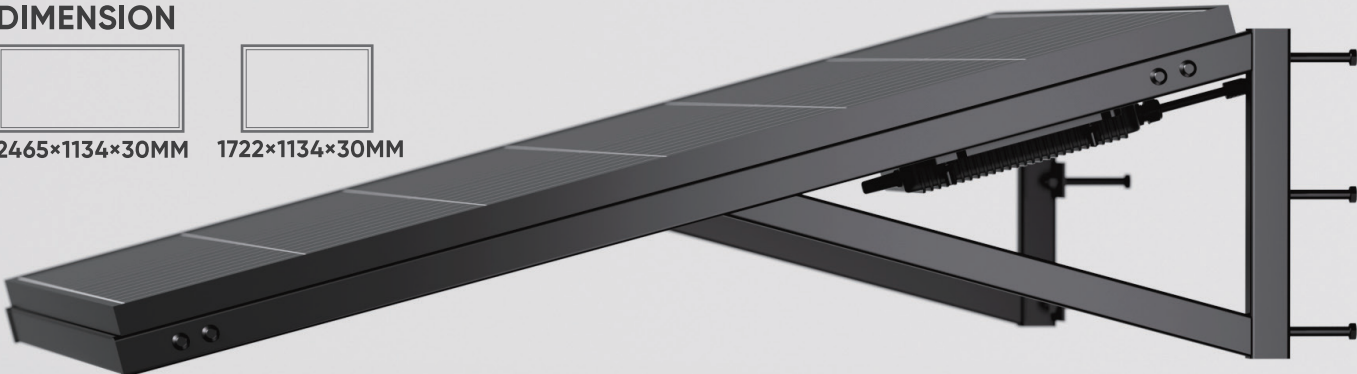
DIMENSION



2465×1134×30MM



1722×1134×30MM









✕ Seamless All-Black design



✕ Engineered to withstand harsh weather conditions



-  Export limitation device
-  Resistant to wind and snow
-  Seamless All-Black design
-  Partial Shading Optimisation
-  Micro-crack Resistance
-  Plug-and-play

GROUND MOUNTING

GROUND MOUNTING

POWER 430W

DIMENSION

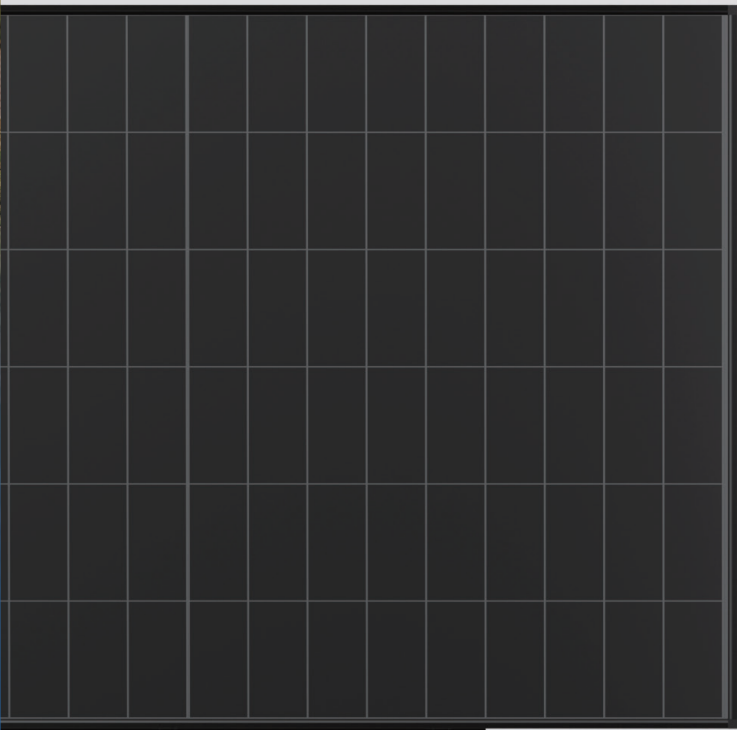
1722×1134×30MM



✂ Foldable Aluminum Mounting System Four-level adjustable: 25°, 30°, 35°, 40°

✂ All-Black Design Foldable and easy to store

- ⚡ Export limitation device
- 📦 Easy DIY installation
- 🏆 Sleek Design
- 📐 Multi-angle adjustable
- 📦 Foldable and easy to store
- 🔌 Plug-and-play



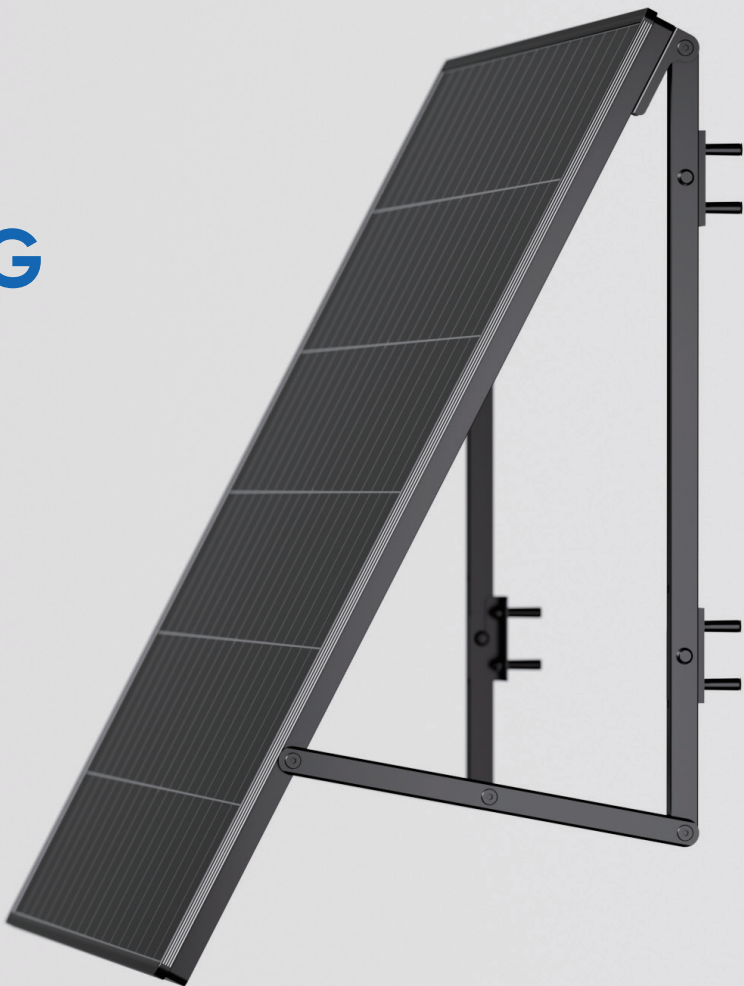
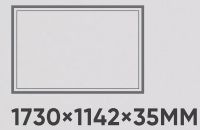
FACADE MOUNTING



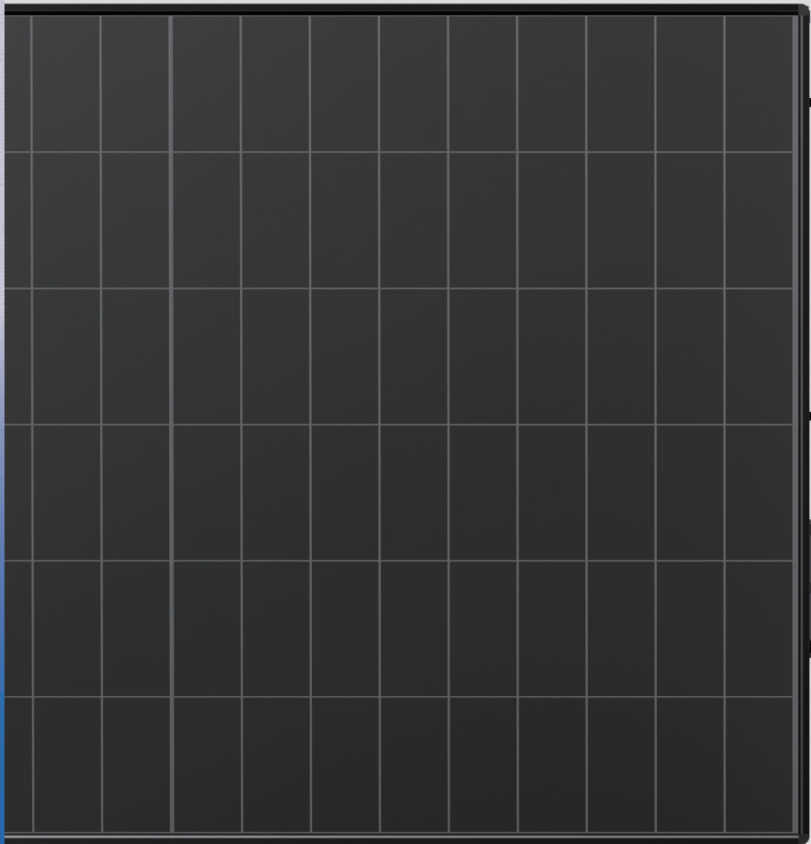
FACADE MOUNTING

POWER 430W

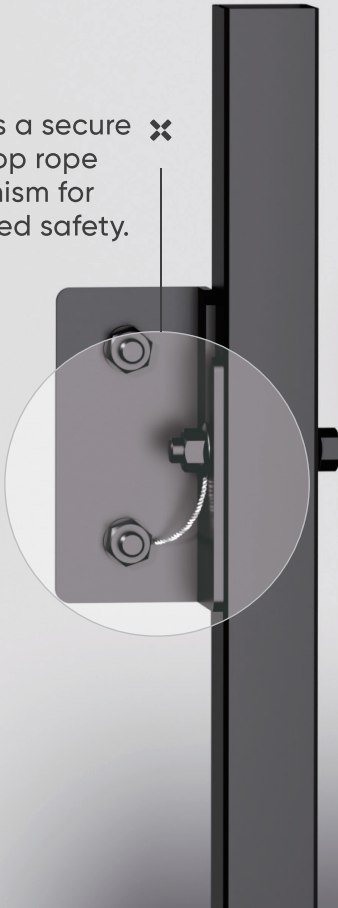
DIMENSION



✕ Constructed with durable, high-strength aluminum mounting system for stability.



Includes a secure ✕ anti-drop rope mechanism for enhanced safety.



- ⚡ | Export limitation device
- 🔒 | Secure Anti-Detachment Design
- 🌟 | Sleek Design
- 🌪️ | Resistant to wind and snow
- 🔌 | Plug-and-play

Balcony Solar System

Plug and Play Family Microplant

Solar Panels Parameters

Module Type	QM182THCD430-54	QM182AHCD665-78
Dimension	1730×1142×35mm/1730x1142x35mm	2465x1134x30mm
Junction Box	IP68 / 3diodes	IP68 / 3diodes
Weight	23.8 kg	33.5kg
Max. Power: Pmax	430W	665W
Efficiency: η	22.05%	23.8%
Open Circuit Voltage: Voc	39.18V	58.86V
Short Circuit Current: Isc	13.28A	14.35A
Max. Power Voltage: Vmp	34.19V	48.73V
Max. Power Current: Imp	12.57A	13.65A
Operating Temperature	-40℃ - +85℃	-40℃ - +85℃
Max. System Voltage	DC 1500V	DC 1500V
Max. Series Fuse Rating	25A	30A
Maximum Static Loading	+5400Pa/-2400Pa	+5400Pa/-2400Pa

Microinverter Parameters

MPPT Operating Voltage Range	16~60V
Max. input Voltage	56V
Rated Output Voltage	230V
Rated Output Frequency	50Hz
Power Factor	0.99
Max. Total Harmonic Distortion	< 3%
Production Warranty	8-year standard warranty, 25-year optional extension
Max. Efficiency	96.5%
Protection Degree	IP67
Weight	3.75kg
Dimension(WxHxD)	239×160×39mm
Operating Temperature Range	-40 to + 65℃

All-in-One Hybrid System (optional)

Dimension	605mm×313mm×353mm
No. of MPPT trackers	2
Max. Input Power	700W
Rated Power	1200W
On/Off-Grid	✓
EPS Switch time	20ms
Capacity	2500Wh
Cycle Life	>6000

Package



430W PV Module



Bracket

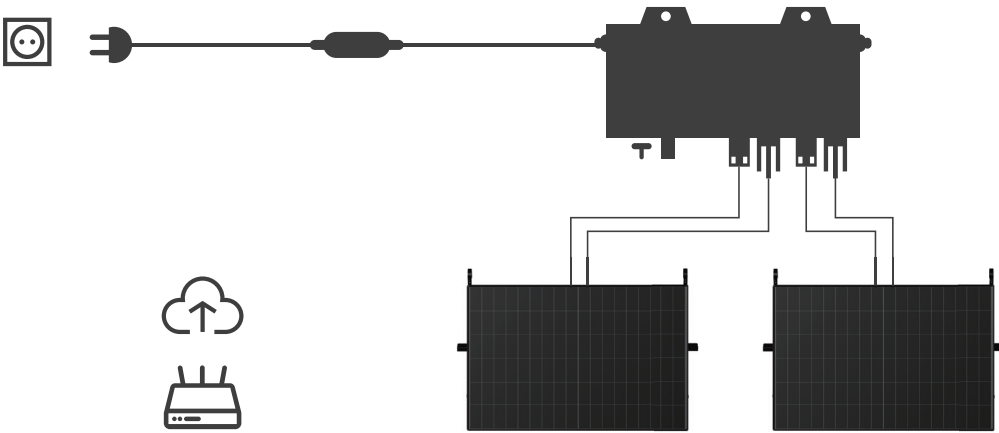


Microinverter



All-in-One Hybrid System (Optional)

Connection Diagram



Solavita App



ARTIST OS

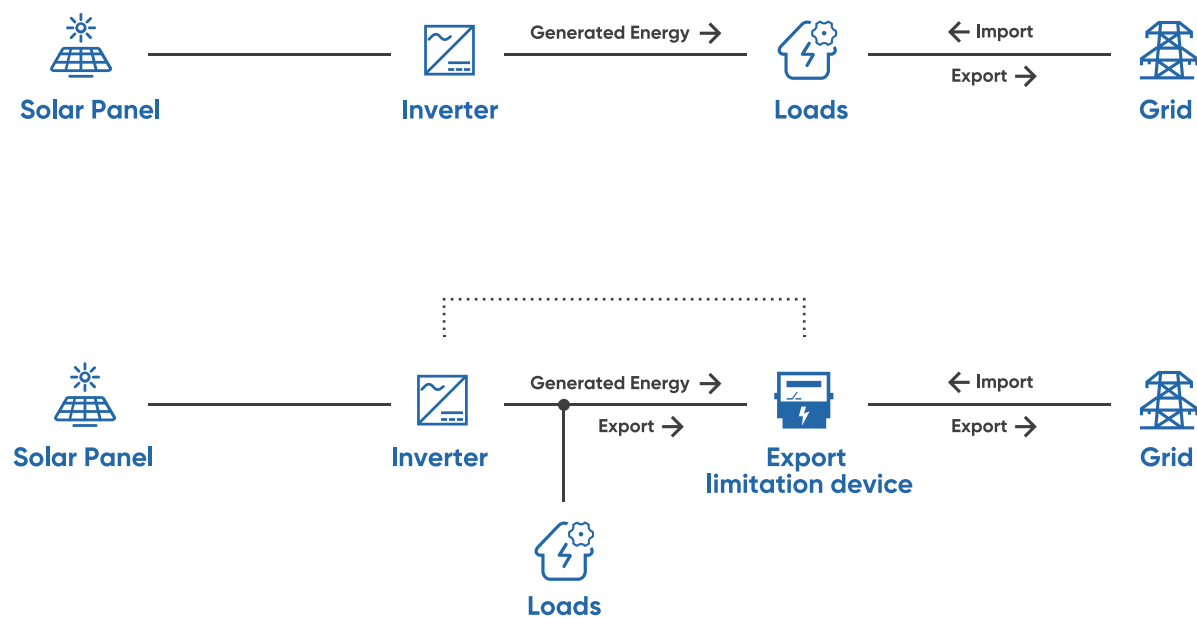
An all-in-one app to monitor generation data, with 24-hour cloud-based management.

Live data monitoring

Plant Status checking

O&M Service

Export limitation Principle



Export limitation Solution

Dynamic Export Control

Fast response time, adapting to rapid power changes (<1 sec)

Intelligent Regulation

Adjust Export limitaion Based on Actual Power Consumption

Integrated Monitoring Platform

Communication module integrates local configuration with Wi-Fi/LAN communication.



All-in-One Hybrid System (Optional)

2.5kWh Capacity
IP65 water and dust resistance | Portable for anywhere

2.5kWh Capacity Coverage

Approximately 25 kilometers of range for a Tesla Model 3
6 hours of emergency power for a typical household
34 times the capacity of a 20000mAh portable battery



Reliable

LiFePO4 Battery
Battery with a wide operating temperature range of -10 °C to 55 °C (charge and discharge)

Uninterrupted Power

<20ms Switchover time

Easy to Carry

Industrial-grade wheels and a telescopic handle
Can be charged directly without an adapter

